

# 25 year celebration

*Concepts & budget*

What will be  
Goodlife

Thank you for being a part  
of our community

We have so  
much to look  
forward to!

What's next?

25 years of  
GOODLIFE

What was  
Goodlife

When did you come join us?  
Place a sticker at the point you started coming  
to Goodlife.

2000

2025

25 years of  
GOODLIFE

What is  
Goodlife

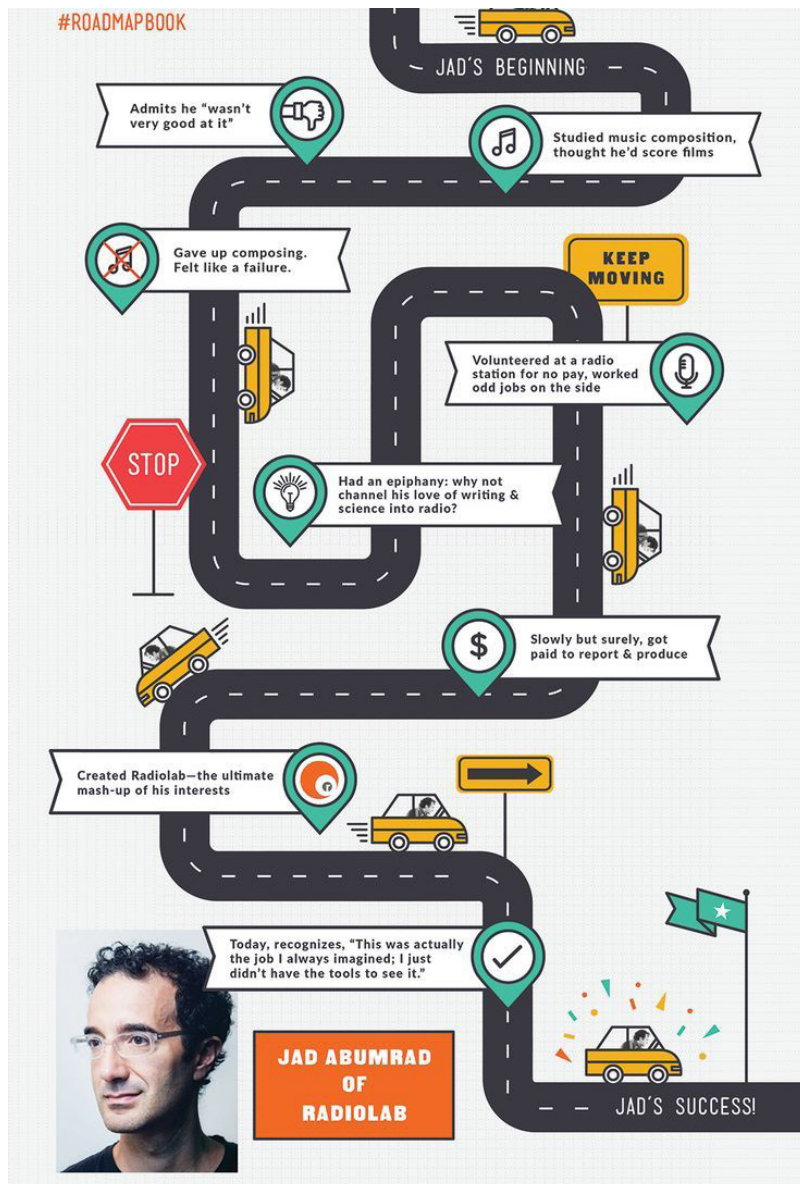
We love our community and  
thankful for each one of you!

Use a marker to fill in a square to represent  
why you come to Goodlife.

■ AQUA	■ LIFEHOUSE
■ CAFE	■ SPORTS
■ CHILDREN	■ TOURS
■ COMMUNITY GROUPS	■ SWIM SCHOOLS
■ GYM	■ YOUNG ADULTS
■ KIDS	■ YOUTH

25 years of  
GOODLIFE

## What was... installation



Print details: Externally (7-10 working days turnaround)

What needs to be done:

- data gathered (Kylie/Ruth)
- timeline constructed (Kylie/Ruth)
- map designed (Sam)
- approval (Lead team)
- print run (External)
- put in centre for community to see (Sam)

Size: 2000x1000mm

Placement: On the window panels near the pool door

Idea: Give the community stickers to add where they came along to goodlife

Resources:

- [stickers](#)

Cost:

- Board - \$53
- Stickers - \$20
- Badges - \$139

Timeline:

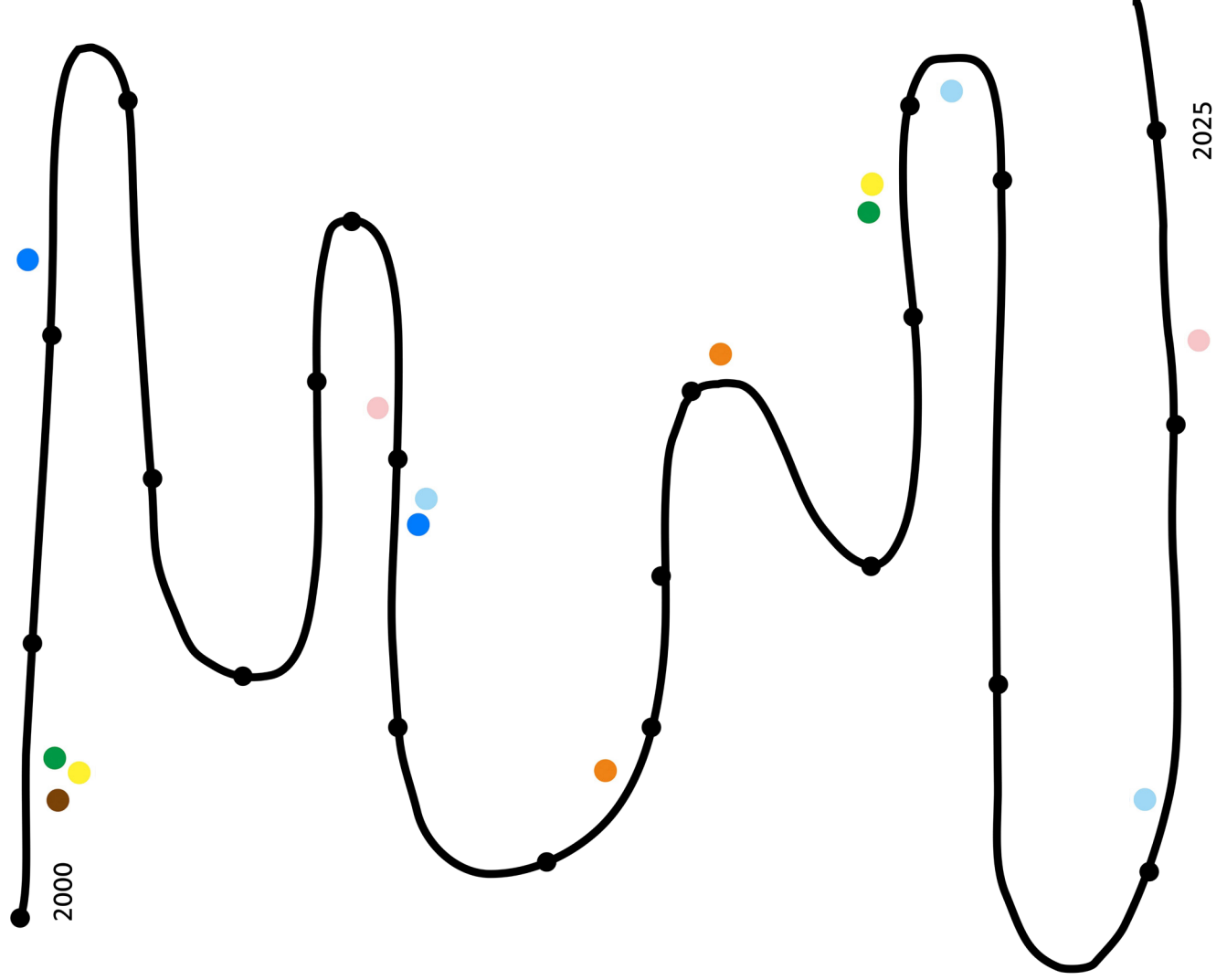
- Approval by: Oct 16
- Set up: Oct 30
- In centre for 2 weeks
- Pack down: Nov 17

# What was Goodlife

Idea

## When did you come join us?

Place a sticker at the point you started coming to Goodlife.



25 years of  
GOODLIFE



## Badges

I've been a part of Goodlife for  
\_\_\_\_\_ years



1-5 years

I've been a part of Goodlife for  
\_\_\_\_\_ years



6-10 years

I've been a part of Goodlife for  
\_\_\_\_\_ years



11-20 years

I've been a part of Goodlife for  
\_\_\_\_\_ years



20-25+ years

## What is... installation



Print details: Externally (7-10 working days turnaround)

What needs to be done:

- list of areas to have on the installation eg: gym, pool, cafe, church, community groups, swim school, youth, young adults, lifehouse, sports.
- grid designed (Sam)
- approval (Nic/Kylie)
- print run (External)
- put in centre for community to see (Sam)

Size: 2000x1000mm

Placement: On the window panels near the pool door

Resources:

- pens
- containers

**Cost:**

- Board - \$53
- Pens - \$20

**Timeline:**

- Approval by: Oct 16
- Set up: Oct 30
- In centre for 2 weeks
- Pack down: Nov 17

# What is Goodlife

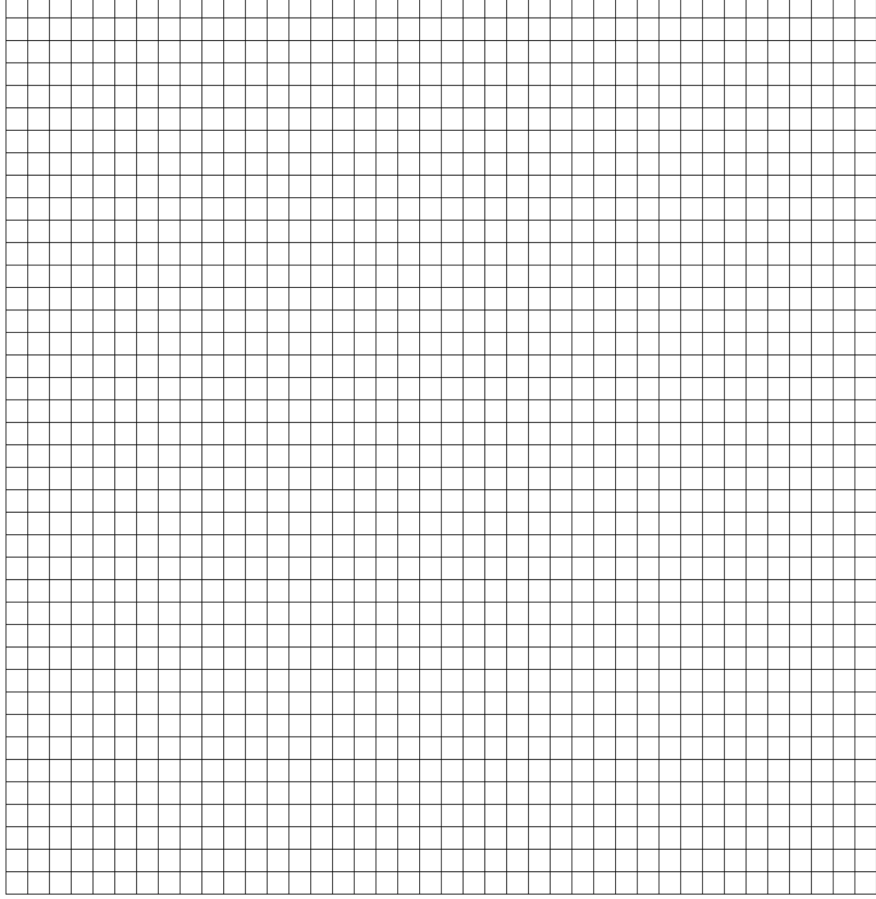
Idea

**We love our community and  
thankful for each one of you!**

Use a marker to fill in a square to represent  
why you come to Goodlife.

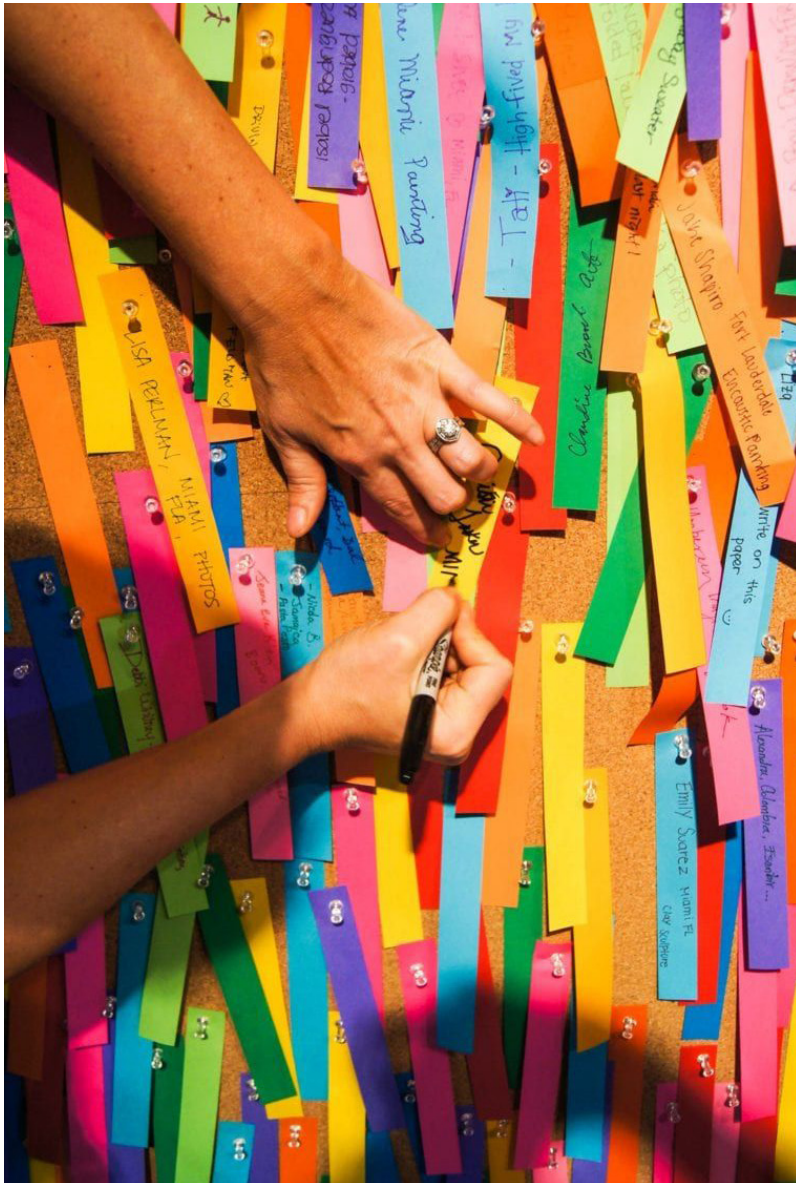
- AQUA
- CAFE
- CHURCH
- COMMUNITY GROUPS
- GYM
- KIDS

- LIFEHOUSE
- SPORTS
- SQUADS
- SWIM SCHOOL
- YOUNG ADULTS
- YOUTH



25 years of  
 GOODLIFE

## What will be... installation



Print details: -

What needs to be done:

- paper cut into strips (Volunteer?)
- design & order envelopes (Sam)

Size: 2000x1000mm

Placement: On the window panels near the pool door

Resources:

- coloured paper
- textas
- thumbtacks

### Cost:

- Board - \$53
- Paper - \$20
- Envelopes - \$250

### Timeline:

- Approval by: Oct 30
- Set up in church: Nov 16
- Kept up in church until Nov 31

# What will be Goodlife

Thank you for being a part  
of our community

We have so  
much to look  
forward to!

What's next?

25 years of  
 GOODLIFE

Idea

# Pledge envelope & coloured paper for what will be installation

25 years of  GOODLIFE

Name:

Phone:

Address:

Amount:

We wouldn't be able to do what we do without your support

